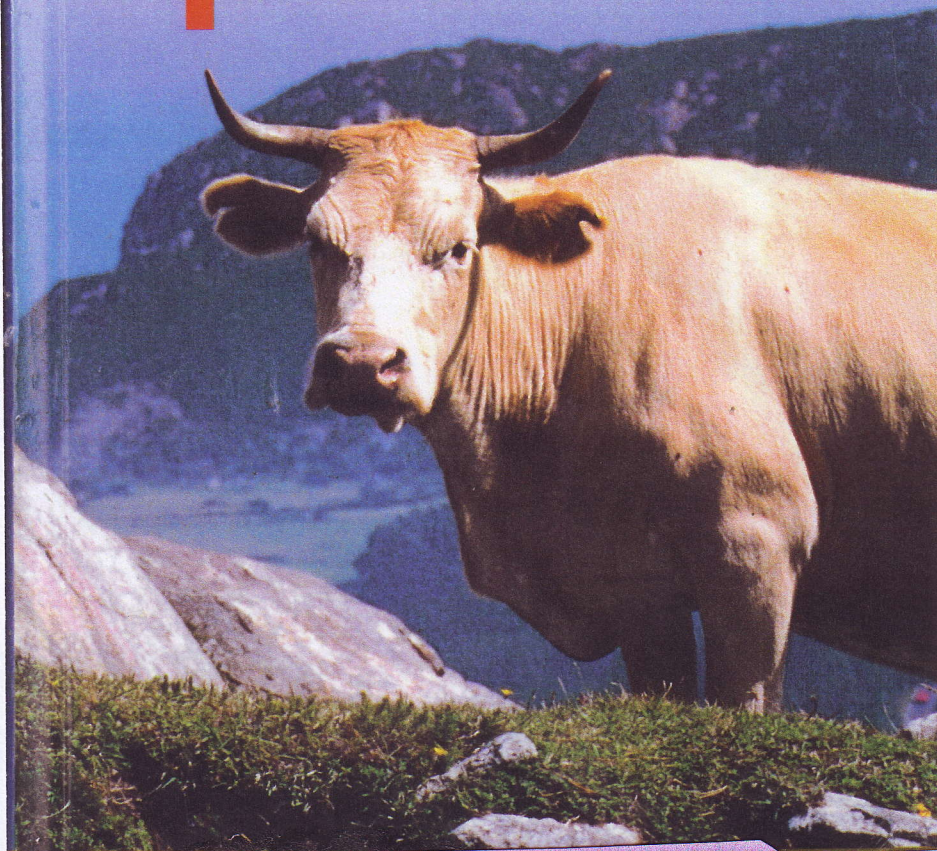


Walking in Spain



Spain

LAXE

☎ 0981 / pop 3400

Laxe's tiny historical quarter still retains remnants of its nobler days, including the 14th-century Gothic church, which boasts excellent sculpted figures. There are several markets, ATMs and pharmacies along the main drag.

Sleeping & Eating

Past the church. **Hostal/Bar Bahía** (☎ 72 82 07; www.bahialaxe.com; Rúa Besugueira 24; d with bathroom €50) has attractive, clean rooms, some with terraces overlooking the port. Manolo, the owner, eagerly acts as Laxe's unofficial tourism wonk and can help with transport to trailheads in the off-season.

